

Meta Registry™

Connecting the global environmental markets

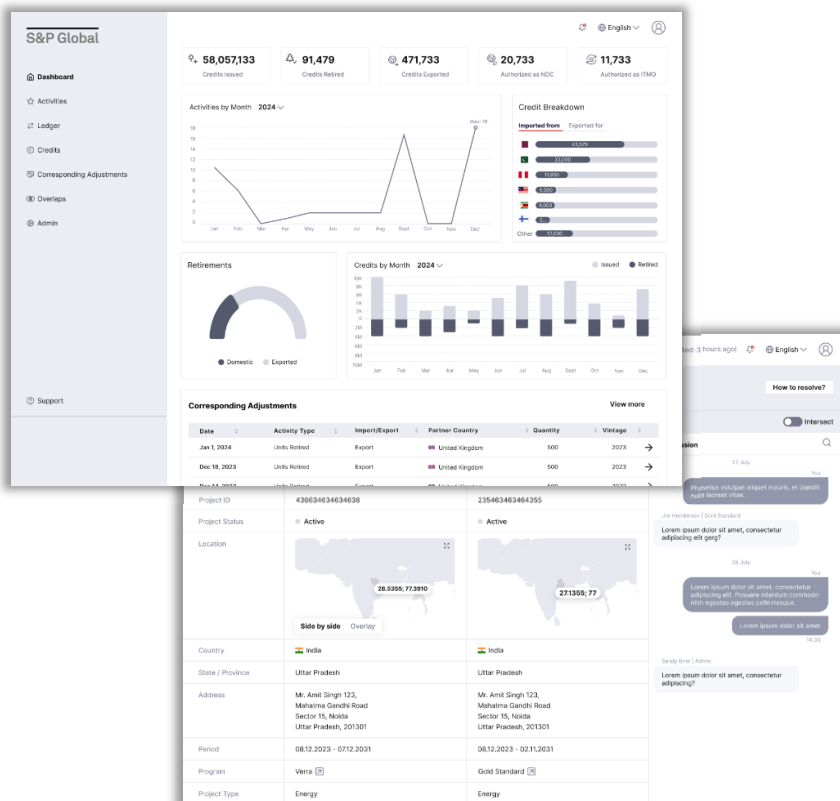
The Meta Registry™ is critical market infrastructure that connects disparate environmental registries around the world with carbon markets and participants to bring transparency and support a well-functioning market.

Supporting market integrity

Using institutional-grade security and automated technology, the Meta Registry™ integrates and reconciles the structure and data of the diverse standards and programs operating across the environmental space. We perform proprietary checks on the data to reduce the risk of double-counting and double-claiming.

Who does the Meta Registry™ benefit?

Meta Registry™ benefits all types of carbon market participants including governments, project developers, buyers, investors, liquidity and data providers. We provide an integrated dashboard to view and manage their portfolios across global registries and reference data to support efficient trading and settlement.



Key Benefits

Offers seamless connectivity to registries across the globe

Features a single login and integrated dashboard to manage portfolios across global registries

Enables clear and effective accounting and tracks:

- Corresponding Adjustments
- Internationally Transferred Mitigation Outcome (ITMO)

Reduces the risk of double-counting and double-claiming

Learn More

Find out how the Meta Registry™ can support your organization.

Contact Us:
registry@spglobal.com

Visit:
spglobal.com/registry



About S&P Global Commodity Insights

At S&P Global Commodity Insights, our complete view of global energy and commodity markets enables our customers to make decisions with conviction and create long-term, sustainable value.

We're a trusted connector that brings together thought leaders, market participants, governments and regulators, and we create solutions that lead to progress. Vital to navigating commodity markets, our coverage includes oil and gas, power, chemicals, metals, agriculture, shipping and energy transition. Platts® products and services, including the most significant benchmark price assessments in the physical commodity markets, are offered through S&P Global Commodity Insights. S&P Global Commodity Insights is a division of S&P Global (NYSE: SPGI).

S&P Global is the world's foremost provider of credit ratings, benchmarks, analytics and workflow solutions in the global capital, commodity and automotive markets. With every one of our offerings, we help many of the world's leading organizations navigate the economic landscape so they can plan for tomorrow, today. For more information visit: <https://www.spglobal.com/commodityinsights>

CONTACT US

The Americas

+1 800 447 2273

EMEA

+44 1344 328 300

Asia-Pacific

+604 291 3600

Japan

+81 3 6262 1887

Copyright © 2024 by S&P Global Commodity Insights, a division of S&P Global Inc. All rights reserved. No content, including by framing or similar means, may be reproduced or distributed without the prior written permission of S&P Global Commodity Insights or its affiliates. The content is provided on an "as is" basis.

[spglobal.com/commodityinsights](https://www.spglobal.com/commodityinsights)